






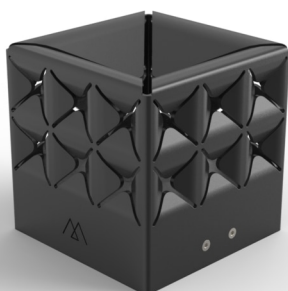


LP6505

La Lampe Popup

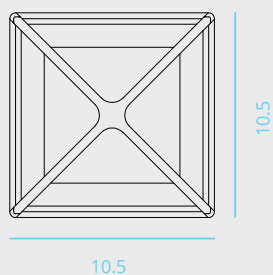
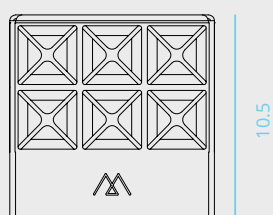
Couleur

-  Charbon
-  Blanc
-  Taupe Clair
-  Moutarde
-  Café



En Detail

[See it on the web](#)



Dimensions

Largeur : 10.5 cm
Hauteur : 10.5 cm
Profondeur : 10.5 cm
Poids : 0.5 Kg

Informations Emballage

Largeur : 12.5 cm
Hauteur : 15.5 cm
Profondeur : 12.5 cm
Poids : 0.7 Kg
Pcs. per Carton: 1

Compositions

Corps : Aluminium
Finition : Peinture cuite au four

Module Solaire

Lumen : 100
Autonomie : 6-10 heures
Temps de Chargement : 5 heures
Durée de vie : 1000 Cycles
Temps de Chargement USB (1.5A) : 3.5 heures
Bluetooth : 4.0